



Shop Floor Control

Accurately estimate material, labor and overhead track actual costs and analyze production variances.

Seamless integration with the most popular accounting software

QuickBooks
Pro, Premier, Enterprise

Sage 50 US
Formerly Sage Peachtree

Sage 50 CA
Formerly Sage Simply Accounting

Sage 300 ERP
Formerly Sage ERP Accpac

- Basic Manufacturing ● req
- Advanced Purchasing ○ opt
- Advanced Production ○ opt
- Material Requirements Planning ○ opt
- Shop Floor Control** ● **opt**
- Serial/Lot Tracking ○ opt
- Bin Tracking ○ opt
- Labor Tracking ○ opt
- Bar Coding ○ opt
- Custom Reporting ○ opt
- Mobile Alerts ○ opt

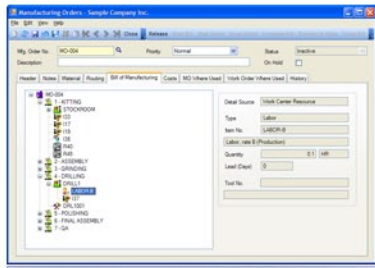
Clear definition of each production operation is the key to effective manufacturing business management. Shop Floor Control delivers the ultimate solution to running a manufacturing plant profitably by allowing you to accurately predict production costs based on estimated material, labor, and overhead, and allowing you to analyze actual production costs.

WHAT'S IN SHOP FLOOR CONTROL?

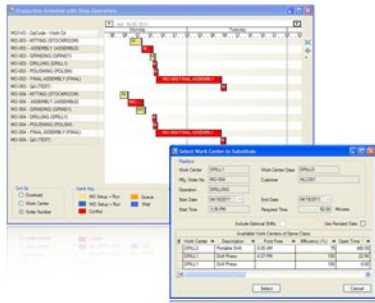
- Tool Management
- Work Center Management
- Shop Operations Management
- Capacity Management

FUNCTIONALITY

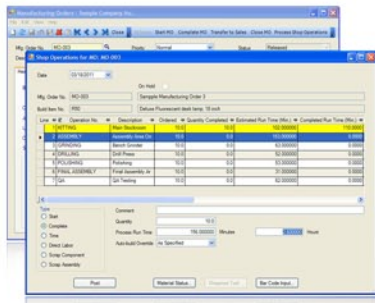
- Track the use and maintenance of production tools.
- Be alerted whenever tools require maintenance or replacement.
- Establish work centers for all production activities.
- Define rates at which each work center can process its work.
- Define days of the week when each work center is open.
- Define an unlimited number of splits per shift, including optional splits for overtime, reserve labor, etc.
- Define required material, labor, and overhead for each work center.
- Roll up material, labor, and overhead costs throughout the entire product structure.
- Create routing details for bills of material and manufacturing orders.
- Estimate assembly times for any production quantity.
- Predict start date for given completion date.
- Predict completion date for given start date.
- Accurately estimate manufacturing costs based on combined material, labor, and overhead.
- Post shop operations to individual production operations.
- Compare actual to estimated manufacturing costs with detailed variance reports.
- Adjust routings to reflect the actual time required to perform an operation.
- Analyze production efficiency for each manufacturing order operation.
- View work center loading for any range of dates.
- Analyze all work center conflicts for any range of dates.
- Resolve work center conflicts quickly and easily using drag and drop capacity management tool.



Define a complete Bill of Manufacturing



Visual, interactive drag-and-drop "whiteboard"



Detailed shop floor data entry for every operation

INCLUDED



12 Months Maintenance



SureStart Coach



60-Day Money Back Guarantee

Manufacturing Information Systems, Inc.
 4 Maxham Meadow Way, Suite 2G
 Woodstock, VT 05091
 (802) 457-4600
 sales@misysinc.com

Take the 6-Step Tour
misysinc.com