



Advanced Production

Track production costs with customized manufacturing orders.

Seamless integration with the most popular accounting software

QuickBooks
Pro, Premier, Enterprise

Sage 50 US
Formerly Sage Peachtree

Sage 50 CA
Formerly Sage Simply Accounting

Sage 300 ERP
Formerly Sage ERP Accpac

- Basic Manufacturing ● req
- Advanced Purchasing ○ opt
- Advanced Production** ● opt
- Material Requirements Planning ○ opt
- Shop Floor Control ○ opt
- Serial/Lot Tracking ○ opt
- Bin Tracking ○ opt
- Labor Tracking ○ opt
- Bar Coding ○ opt
- Custom Reporting ○ opt
- Mobile Alerts ○ opt

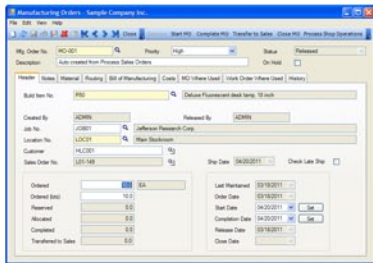
Job shops and manufacturers who create variants of standard assemblies (or custom orders for special "one-off" items) will discover that the Advanced Production module provides them with critical importation needed to track their production activities. With Advanced Production, you'll be able to predict the cost of every job and track your performance.

WHAT'S IN ADVANCED PRODUCTION?

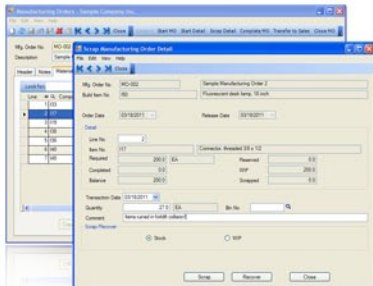
- Manufacturing Orders (MO's)
- Customized Job Orders
- Cost Estimating and Tracking

FUNCTIONALITY

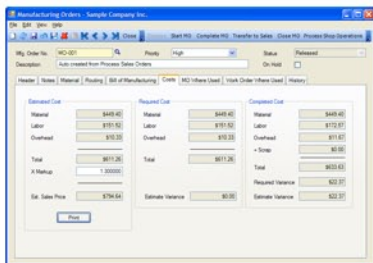
- Create Manufacturing Orders either from a standard bill of materials, or from scratch without previously defined components.
- Use Bills of Material with Routing Details through Work Centers to guide shop floor operations.
- Create and print cost estimates based on the unit cost of known components and the estimated cost of provisional items.
- Compare projected manufacturing cost with the actual cost for accurate analyses of productivity and profitability.
- Declare provisional items that may not be completely defined, or are unknown at the time.
- Associate jobs with manufacturing orders for detailed cost analysis.
- Edit manufacturing orders to create custom job orders.
- Allocate special items such as labor, supplies, and tooling to customize manufacturing order.
- Generate quotes for custom jobs using estimated material costs for stock or non-stock items and estimated labor and resource expenses. (Can use routing details for more precise cost estimates when using the Shop Floor Control module as well).
- Convert quotes in MISys to sales orders in your accounting system.
- Convert non-stock items and Build Items to inventoried items.
- Attach files and pictures to MO's to provide unlimited amounts of online documentation.
- Create and link child MO's to any parent MO.
- Copy previous orders to speed up order generation.
- Print internal manufacturing order approvals and multi-page production manufacturing orders.
- Create and print job travelers to accompany jobs on the shop floor.
- Analyze standard, projected, and actual job costs with performance variances.
- Create detailed manufacturing order pick lists.
- Pick partial or complete manufacturing orders.
- Utilize an automatic back-flush to support Stock, WIP, and Reserve stock.
- Back-flush complete or partially completed manufacturing orders.
- Automatically adjust raw material inventory levels based on actual production yield.
- Create special handling of non-backflush items.
- Record scrap resulting from specific MO processing.
- Expedite and close MO's at any time with automatic cleanup of partially committed material.
- Transfer completed items directly to the finished goods inventory.



Create Manufacturing Orders



Track scrap for every order



Compare estimated, current, and completed costs in detail

INCLUDED



12 Months Maintenance



SureStart Coach



60-Day Money Back Guarantee

Manufacturing Information Systems, Inc.
4 Maxham Meadow Way, Suite 2G
Woodstock, VT 05091
(802) 457-4600
sales@misysinc.com

Take the 6-Step Tour
misysinc.com